

# PERSONAL GIFTS & ACCESSORIES



**Ari D. Norman**  
LONDON

THE FIRST BRITISH SILVERSMITH EVER TO  
RECEIVE THE QUEEN'S AWARD FOR EXPORT



GT2083



GT2276



GT921

GT921	Hip flask with security screw top	114mm / 4 <sup>1</sup> / <sub>2</sub> "	×	95mm / 3 <sup>3</sup> / <sub>4</sub> "	18cl / 6 fl/oz
GT2083	Hip flask with screw top	108mm / 4 <sup>1</sup> / <sub>4</sub> "	×	64mm / 2 <sup>1</sup> / <sub>2</sub> "	9cl / 3 fl/oz
GT2276	Funnel	29mm / 1 <sup>1</sup> / <sub>8</sub> "	—	—	—



GT2281



GT2110



GT8



GT10

GT8	Small toughened glass tube with 5 dice	54mm / 2 <sup>1</sup> / <sub>8</sub> "	x	13mm / 1 <sup>1</sup> / <sub>2</sub> "	-
GT10	Large toughened glass tube with 6 dice	95mm / 3 <sup>3</sup> / <sub>4</sub> "	x	22mm / 7 <sup>7</sup> / <sub>8</sub> "	-
GT2110	Single deck of 23ct gold covered standard playing cards	89mm / 3 <sup>1</sup> / <sub>2</sub> "	x	57mm / 2 <sup>1</sup> / <sub>4</sub> "	x 19mm / 3 <sup>3</sup> / <sub>4</sub> "
GT2281	Single deck of 925 silver covered standard playing cards	89mm / 3 <sup>1</sup> / <sub>2</sub> "	x	57mm / 2 <sup>1</sup> / <sub>4</sub> "	x 19mm / 3 <sup>3</sup> / <sub>4</sub> "



GT1091



GT820



GT747

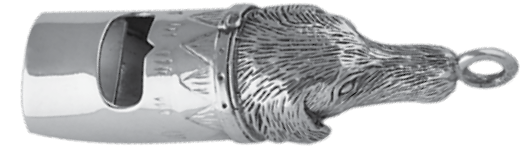
GT747	Plain round pocket ashtray	19mm / 3/4"	x	48mm / 1 7/8"
GT820	Hand engraved Victorian pattern round pocket ashtray	19mm / 3/4"	x	48mm / 1 7/8"
GT1091	Engine turned refillable lighter with engraving panel	83mm / 3 1/4"	x	-



GT2016



GT64



GT346



GT428



GT494

GT498

BOX26	Golf marker and golf tee shaped pencil set	-	-
BOX38	Golf marker, golf tee and golf tee shaped pencil set	-	-
BOX40	Golf tee and golf marker set	-	-
GT64	Owl whistle	38mm / 1½"	-
GT346	Dog whistle	51mm / 2"	-
GT428	Golf tee	44mm / 1¾"	-
GT494	Golf marker	13mm / ½"	× 44mm / ¾"
GT498	Golf tee shaped pencil	64mm / 2½"	× 13mm / ½"
GT2016	Fox head stirrup cup with gilded interior	127mm / 5"	9cl / 3 fl/oz



GT186



GT87



GT86

GT86	Owl spine bookmark	160mm / 6"
GT87	Cat spine bookmark	137mm / 5 <sup>3</sup> / <sub>8</sub> "
GT186	Plain spine bookmark with engravable disc	162mm / 6 <sup>3</sup> / <sub>8</sub> "



GT307



GT743



GT85

GT85	Chain clip spine bookmark with book charm	327mm / 12 <sup>7</sup> / <sub>8</sub> "
GT307	Plain bookmark with black tassel	76mm / 3"
GT743	Plain rectangular bookmark with black tassel	102mm / 4"



GT641



GT122



GT123



GT587



GT686



GT591



GT239



GT185

GT122	Hand engraved Victorian pattern heart bookmark	41mm / 1 <sup>5</sup> / <sub>8</sub> "
GT123	Owl bookmark	57mm / 2 <sup>1</sup> / <sub>4</sub> "
GT185	Trowel bookmark set with black onyx	76mm / 3"
GT239	Trowel bookmark set with cornelian	76mm / 3"
GT587	Treble clef bookmark	44mm / 1 <sup>3</sup> / <sub>4</sub> "
GT591	Trowel bookmark set with mother of pearl	76mm / 3"
GT641	Engraved Victorian pattern hand shape bookmark	70mm / 2 <sup>3</sup> / <sub>4</sub> "
GT686	Trowel bookmark with embossed Victorian pattern	76mm / 3"





GT215



GT216



GT231



GT2045



GT2061



GT308



GT309

GT215	Antique finish marcasite and garnet set bird bookmark	57mm / 2¼"
GT216	Antique finish marcasite set flower bookmark	54mm / 2⅛"
GT231	Antique finish marcasite set butterfly bookmark	54mm / 2⅛"
GT308	Mother of pearl, marcasite and emerald set panther bookmark	83mm / 3¼"
GT309	Black onyx, marcasite and emerald set panther bookmark	83mm / 3¼"
GT2045	Red enamel, marcasite and black onyx set ladybird bookmark	76mm / 3"
GT2061	Red enamel and marcasite set heart bookmark	79mm / 3⅛"



GT22



GT2006



GT659



GT875



GT874



GT872

GT22	Painted enamel horse bookmark	70mm / 2 <sup>3</sup> / <sub>4</sub> "
GT659	Comedy and tragedy bookmark	64mm / 2 <sup>1</sup> / <sub>2</sub> "
GT872	Owl bookmark	86mm / 3 <sup>3</sup> / <sub>8</sub> "
GT874	Heart bookmark	67mm / 2 <sup>5</sup> / <sub>8</sub> "
GT875	Elephant bookmark	76mm / 3"
GT2006	Mayflower sailing ship bookmark	73mm / 2 <sup>7</sup> / <sub>8</sub> "



GT846



GT848



GT847



GT2288



GT2289



GT2290



GT1021



GT1022



GT1023

GT846	Antique finished owl bookmark	83mm / 3 1/4"
GT847	Antique finished dog bookmark	79mm / 3 1/8"
GT848	Antique finished horse bookmark	79mm / 3 1/8"

GT1021	Moving teddy bear bookmark	76mm / 3"
GT1022	Moving rabbit bookmark	76mm / 3"
GT1023	Moving elephant bookmark	73mm / 2 7/8"

GT2288	Moving turtle bookmark	69mm / 2 3/4"
GT2289	Moving penguin bookmark	73mm / 2 7/8"
GT2290	Moving dog bookmark	73mm / 2 7/8"



GT343



GT471



GT954

GT343	Plain business / credit card case	98mm / 3 <sup>7</sup> / <sub>8</sub> " × 64mm / 2 <sup>1</sup> / <sub>2</sub> "
GT471	Engine turned business / credit card case	98mm / 3 <sup>7</sup> / <sub>8</sub> " × 64mm / 2 <sup>1</sup> / <sub>2</sub> "
GT954	Linear design business / credit card case	98mm / 3 <sup>7</sup> / <sub>8</sub> " × 64mm / 2 <sup>1</sup> / <sub>2</sub> "



GT782



GT2025



GT2127



GT782	Engine turned business / credit card case	89mm / 3 1/2" x 64mm / 2 1/2"
GT2025	Ribbed business / credit card case	95mm / 3 3/4" x 62mm / 2 3/8"
GT2127	Engine turned push button business / credit card case	89mm / 3 1/2" x 64mm / 2 1/2"



K402



K405



KPT404

K402	Horse key ring	51mm / 2"
K405	Dog key ring	54mm / 2 1/8"
*KPT404	Lucky horseshoe keychain	32mm / 1 1/4"
*KPT411	Antique finish golf bag keychain	38mm / 1 1/2"
*KPT455	Riding boot keychain	32mm / 1 1/4"

*\*Total length including 6cm / 2 3/8" keychain fitting*



KPT455



KPT411



KPT418



KPT410



KPT433



KPT403

*KPT403	Elephant keychain	25mm / 1"
*KPT410	Pig keychain	25mm / 1"
*KPT418	Moving pig keychain	48mm / 1 <sup>7</sup> / <sub>8</sub> "
*KPT433	Moving teddy bear keychain	38mm / 1 <sup>1</sup> / <sub>2</sub> "

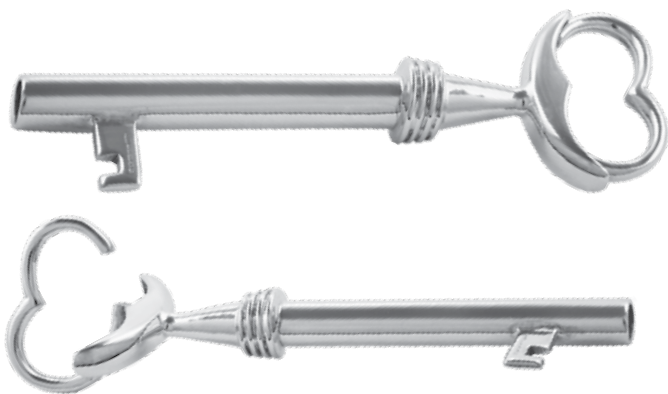
*\*Total length including 6cm / 2<sup>3</sup>/<sub>8</sub>" keychain fitting*



K394



K2000



K415



K394	Panther key ring with silver key ring fitting	60mm / 2 <sup>3</sup> / <sub>8</sub> "
K415	Spring loaded key shape key ring	79mm / 3 <sup>1</sup> / <sub>8</sub> "
K2000	Feature hallmark interlocking circles key ring with steel key ring fittings	32mm / 1 <sup>1</sup> / <sub>4</sub> "





GT1084



K429



GT2246

GT1084	Push button torch key ring with steel fitting and engravable panel	86mm / 3 <sup>3</sup> / <sub>8</sub> "
GT2246	Feature hallmark 8GB USB key ring with steel fitting	64mm / 2 <sup>1</sup> / <sub>2</sub> "
K429	Working compass keychain	38mm / 1 <sup>1</sup> / <sub>2</sub> "



GT1020



GT117

GT117	Feature hallmark money clip	51mm / 2"	x	19mm / 3/4"
GT1020	Double sided ribbed money clip	64mm / 2 1/2"	x	25mm / 1"



GT823



GT2009

GT823	Engine turned money clip	51mm / 2"	x	19mm / 3/4"
GT2009	Double sided engine turned money clip	67mm / 2 5/8"	x	25mm / 1"



CU389



CU385



CU461



CU388



CU386



CU460

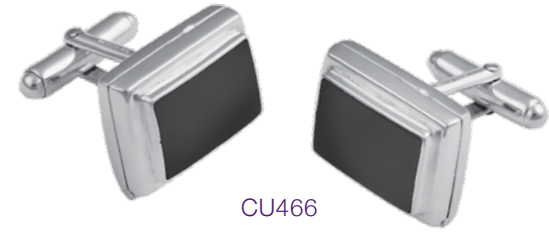
- CU385 ..... Mother of pearl rectangular chain link cufflinks
- CU386 ..... Black onyx rectangular chain link cufflinks
- CU388 ..... Black onyx oval chain link cufflinks
- CU389 ..... Mother of pearl oval chain link cufflinks
- CU460 ..... Black onyx round fixed post cufflinks
- CU461 ..... Mother of pearl round fixed post cufflinks



CU403



CU402



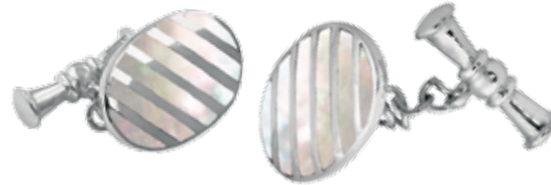
CU466



*...Young Lee and Adam.*



CU405



CU404



CU467



CU395



CU394

- CU394 ..... Mother of pearl striped round chain link cufflinks
- CU395 ..... Black onyx striped round chain link cufflinks
- CU402 ..... Mother of pearl oval chain link cufflinks
- CU403 ..... Black onyx oval chain link cufflinks
- CU404 ..... Mother of pearl striped oval chain link cufflinks
- CU405 ..... Black onyx striped oval chain link cufflinks
- CU466 ..... Black onyx rectangular locket swivel cufflinks
- CU467 ..... Mother of pearl rectangular locket swivel cufflinks



CU420



CU419



CU412



CU416



CU417

- CU412 Heavy gauge plain oval swivel cufflinks
- CU416 Heavy gauge plain round swivel cufflinks
- CU417 Heavy gauge plain rectangular swivel cufflinks
- CU419 Heavy gauge engine turned round swivel cufflinks
- CU420 Heavy gauge engine turned oval swivel cufflinks



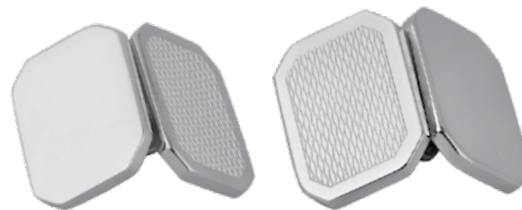
CU410



CU411



CU421



CU408



CU409

- CU408 ..... Heavy gauge engine turned rectangular chain link cufflinks
- CU409 ..... Heavy gauge engine turned oval chain link cufflinks
- CU410 ..... Heavy gauge feature hallmark rectangular chain link cufflinks
- CU411 ..... Heavy gauge feature hallmark oval chain link cufflinks
- CU421 ..... Heavy gauge engine turned rectangular swivel cufflinks



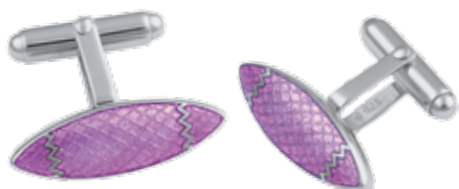
CU483



CU516



CU510



CU564



CU565



CU383



CU513



CU544



CU605

- CU383 Enamel Yin and Yang fixed post cufflinks
- CU483 Enamel hot and cold tap swivel cufflinks
- CU510 Enamel globe swivel cufflinks
- CU513 Enamel and marcasite set ladybird swivel cufflinks
- CU516 Enamel British bulldog and union jack chain link cufflinks
- CU544 Enamel shamrock swivel cufflinks set
- CU564 Pink enamel swivel cufflinks
- CU565 Treble clef on black enamel swivel cufflinks
- CU605 Gold plated and enamel frog and crown swivel cufflinks





CU392



CU441



CU459



CU458



CU391



CU465



CU384



CU393

- CU384 Enamel racing chain link cufflinks
- CU391 Enamel fishing chain link cufflinks
- CU392 Enamel hunting chain link cufflinks
- CU393 Enamel golf chain link cufflinks
- CU441 Enamel pheasant chain link cufflinks
- CU458 Enamel horse chain link cufflinks
- CU459 Enamel dogs chain link cufflinks
- CU465 Enamel sailing chain link cufflinks



CU497



CU481



CU492



CU538



CU537



CU541

- CU462 Plain rectangular locket swivel cufflinks
- CU481 Lucky horseshoe swivel cufflinks
- CU492 Horses head swivel cufflinks with gold plating
- CU497 Horses head swivel cufflinks
- CU537 Sailing boat swivel cufflinks
- CU538 Ships wheel swivel cufflinks
- CU541 Polo player swivel cufflinks



CU462



CU597



CU379



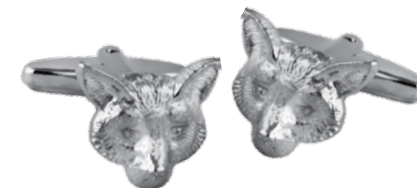
CU504



CU469



CU487



CU495



CU470



CU475

- CU379 Garnet set frog swivel cufflinks
- CU469 Moving teddy bear swivel cufflinks
- CU470 Champagne bottle swivel cufflinks with gold plating
- CU475 Scooter swivel cufflinks with gold plating
- CU487 Lion swivel cufflinks
- CU495 Fox head swivel cufflinks
- CU504 Frog and crown chain link cufflinks
- CU597 Front and back of pig swivel cufflinks



CU545



CU582



CU585

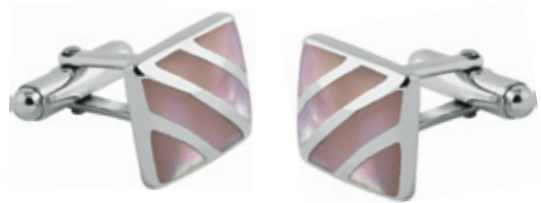


CU464



CU463

- CU463 ..... Mother of pearl, ruby and marcasite set panther swivel cufflinks
- CU464 ..... Black onyx, ruby and marcasite set panther swivel cufflinks
- CU545 ..... Black onyx fleur de lys swivel cufflinks
- CU582 ..... Plain rectangular fixed post cufflinks
- CU585 ..... Emerald set tigers head swivel cufflinks



CU382



CU580



CU380



CU450



CU453



CU485



CU438



CU454

- CU380 Mother of pearl and black onyx hexagonal swivel cufflinks
- CU382 Rectangular swivel cufflinks set with strips of pink shell
- CU438 Black and white enamel chequer design fixed cufflinks
- CU450 Sapphire set wrap around cufflinks
- CU453 Garnet set wrap around cufflinks
- CU454 Emerald set wrap around cufflinks
- CU485 Enamel playing card suit chain link cufflinks
- CU580 Mother of pearl button swivel cufflinks



BOX152



BOX153



GT2277



BOX154



BOX155



GT2278

- BOX152 Black onyx cufflinks and studs dress shirt set
- BOX153 Mother of pearl cufflinks and studs dress shirt set
- BOX154 Set of 4 black onyx studs
- BOX155 Set of 4 mother of pearl studs
- GT2277 Single onyx stud
- GT2278 Single mother of pearl stud



BOX156



BOX192



GT2280



BOX193

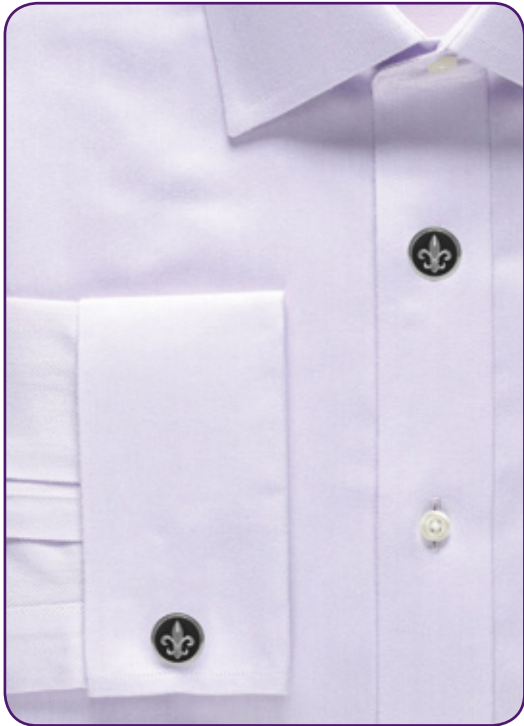


GT2279



BOX165

- BOX156 Plain silver cufflinks and studs dress shirt set
- BOX165 Set of 4 plain silver studs
- BOX192 Mother of pearl button design cufflinks and studs dress shirt set
- BOX193 Set of 4 mother of pearl button design studs
- GT2279 Single plain silver stud
- GT2280 Single mother of pearl button design stud



GT2100



GT2099



GT2060



GT2059

- GT2059 ..... Pair of enamel shamrock button covers
- GT2060 ..... Pair of black onyx and silver fleur de lys button covers
- GT2099 ..... Pair of mother of pearl button covers
- GT2100 ..... Pair of black onyx button covers





GT636



GT1061



GT691



GT636	Pair of feature hallmark collar stiffeners	57mm / 2¼"
GT691	Tie knot napkin clip	44mm / 1¾"
GT1061	Lapel flower holder	54mm / 2⅛"



WTCH3



WTCH4

WTCH3 Diamond effect round dial, black leather strap with silver buckle, swiss movement, water resistant case, sapphire set winder

WTCH4 Vermeil watch with round dial, brown leather strap with vermeil buckle, swiss movement, water resistant case, sapphire set winder

EXTENDED LENGTH

WATCH FACE

235mm / 9 1/4"

32mm / 1 1/4"

235mm / 9 1/4"

35mm / 1 3/8"



WTCH16



WTCH17

WTCH16

Men's vermeil watch, curved champagne dial, brown leather strap with vermeil buckle, swiss movement, water resistant case, sapphire set winder

WTCH17

Ladies' vermeil watch, curved champagne dial, brown leather strap with vermeil buckle, swiss movement, water resistant case, sapphire set winder

EXTENDED LENGTH

WATCH FACE

229mm / 9"

29mm / 1 1/8"

25mm / 1"

216mm / 8 1/2"

25mm / 1" x 19mm / 3/4"



WTCH10



WTCH11

		<u>EXTENDED LENGTH</u>	<u>WATCH FACE</u>
WTCH10	Men's watch, curved white enamel dial, black leather strap, swiss movement, water resistant case, onyx set winder	229mm / 9"	29mm / 1 <sup>1</sup> / <sub>8</sub> " × 25mm / 1"
WTCH11	Ladies' watch, curved white enamel dial, black leather strap, swiss movement, water resistant case, onyx set winder	210mm / 8 <sup>1</sup> / <sub>4</sub> "	25mm / 1" × 19mm / <sup>3</sup> / <sub>4</sub> "



WTCH5

WTCH5 Watch with solid silver strap, mother of pearl dial, swiss movement, water resistant case, sapphire set winder, adjustable strap

EXTENDED LENGTH

232mm / 9<sup>1</sup>/<sub>8</sub>"

WATCH FACE

25mm / 1" × 19mm / <sup>3</sup>/<sub>4</sub>"



WTCH6



WTCH7

- WTCH6** Mother of pearl square dial with 42 black diamonds, 0.37 carats, black leather strap with silver buckle, swiss movement, water resistant case, black diamond set winder
- WTCH7** Mother of pearl round dial with 34 black diamonds, 0.31 carats, black leather strap with silver buckle, swiss movement, water resistant case, black diamond set winder

EXTENDED LENGTH

WATCH FACE

235mm / 9<sup>3</sup>/<sub>4</sub>"

25mm / 1" × 19mm / <sup>3</sup>/<sub>4</sub>"

229mm / 9"

29mm / 1<sup>1</sup>/<sub>8</sub>"



WTCH1



WTCH2

		<u>EXTENDED LENGTH</u>	<u>WATCH FACE</u>
WTCH1	Vermeil watch with square dial, 53 black and white diamonds, 0.44 carats, brown leather strap with vermeil buckle, swiss movement, water resistant case, diamond set winder	216mm / 8½"	22mm / 7⁄8" × 19mm / ¾"
WTCH2	Vermeil watch with round dial, 45 black and white diamonds, 0.38 carats, brown leather strap with vermeil buckle, swiss movement, water resistant case, diamond set winder	225mm / 8⁷⁄8"	29mm / 1¹⁄₈"



GT1089



GT386

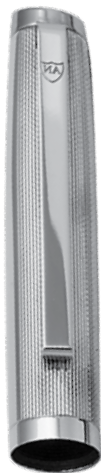
GT387

GT386	Brown leather and linear pattern ballpoint pen with engravable panel	140mm / 5½"
GT387	Brown leather and linear pattern fountain pen with engravable panel	137mm / 5⅜"
GT1089	Black leather and linear pattern rollerball pen with 5pt diamond set clip and engravable panel	140mm / 5½"





GT1063



GT1064



GT1071



GT1072



GT1063	Engine turned ballpoint pen with engravable panel	137mm / 5 <sup>3</sup> / <sub>8</sub> "
GT1064	Engine turned fountain pen with engravable panel	140mm / 5 <sup>1</sup> / <sub>2</sub> "
GT1071	Black acrylic and engine turned ballpoint pen with engravable panel	140mm / 5 <sup>1</sup> / <sub>2</sub> "
GT1072	Black acrylic and engine turned fountain pen with engravable panel	146mm / 5 <sup>3</sup> / <sub>4</sub> "



GT1067



GT1068



GT1069



GT1070

GT1067	Rings pattern ballpoint pen	140mm / 5½"
GT1068	Rings pattern fountain pen	146mm / 5¾"
GT1069	Engine turned wave design ballpoint pen	140mm / 5½"
GT1070	Engine turned wave design fountain pen	146mm / 5¾"



GT572



GT1099



GT1065



GT1066

GT572	Plain ballpoint pen	137mm / 5"
GT1065	Black acrylic and engine turned slim ballpoint pen with engravable panel	137mm / 5"
GT1066	Navy blue acrylic and engine turned slim ballpoint pen with engravable panel	137mm / 5"
GT1099	Burgundy acrylic and engine turned ballpoint pen with engravable panel	140mm / 5½"



ARGENTA HOUSE

ARGENTA WAY

LONDON

NW10 0AZ

ENGLAND

 +44(0)20 8900 0700

 +44(0)20 8900 1277

 [info@aridnorman.co.uk](mailto:info@aridnorman.co.uk)

 [www.aridnorman.co.uk](http://www.aridnorman.co.uk)

 [twitter.com/AriDNorman](https://twitter.com/AriDNorman)

 [facebook.com/AriDNormanLtd](https://facebook.com/AriDNormanLtd)

**Ari D. Norman**

LONDON